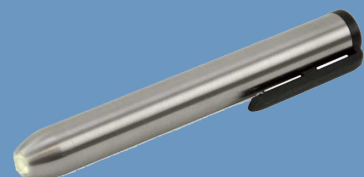
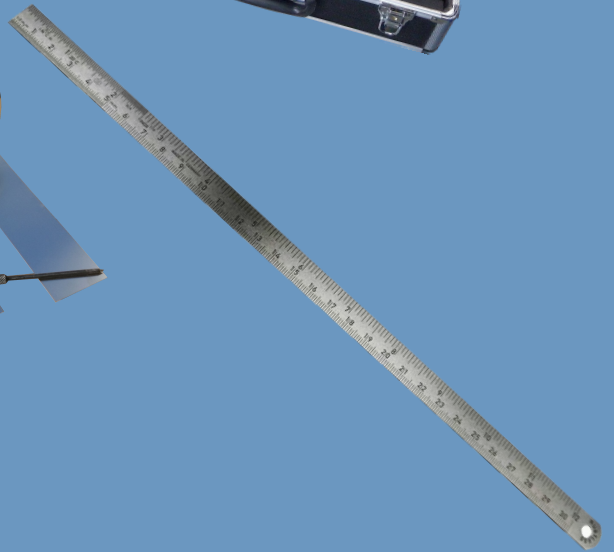
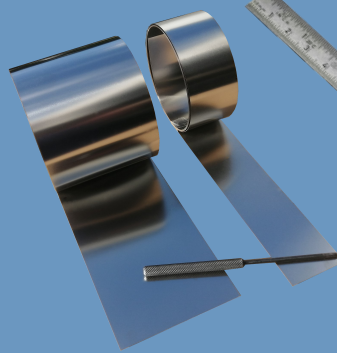




JA-Welding equipment



JA-Controll-Service-Box



90000131



Contents of the JA - control service box

Article no.	description
90000100	(*) Digital clamp meter P 1625 for direct and alternating current voltage, Alternating current: 1000 A, direct current: 1000 A, temperature meas. (-40 ° C - 1000 ° C)
90000101	JA-gas flow meter for precise gas flow determination at the burner outlet or with forming gas 0 - 50 liters / min.
J0410120	JA-battery handle for interior control device with slide switch including batteries
J0410121	JA-lamp holder with bulb for the internal control device
J0410122	JA-extension straight, for internal control device, approx. 300 mm long
J0410123	JA-Angled extension, for internal control device, approx. 200 mm long
J0410124	JA-probe flexible, for internal control device, approx. 200 mm long
J0410125	JA-probe, flexible, for internal control device, approx. 300 mm long
J0410130	JA-mirror with ball joint and clamping sleeve for lamp holder Ø 16.0 mm
J0410131	JA-mirror with ball joint and clamping sleeve for lamp holder Ø 22.0 mm
J0410132	JA-mirror with ball joint and clamping sleeve for lamp holder Ø 30.0 mm
J0410133	JA-mirror with ball joint and clamping sleeve for lamp holder Ø 50.0 mm
90000095	JA-aluminum weld seam gauge; for measuring A-dimension and seam elevation, labeled on both sides
90000109	JA-Stainless steel finger lamp for illuminating welding joints
90000110	Pocket magnifier, magnification 3x; 6x; 9x
90000111	(*) Time stop watch digital
90000112	JA-telescopic magnet with ballpoint pen, 900 mm long
90000139	(*) Second thermometer PT 5110 (digital display) -50 ° C to 1300 ° C, without measuring sensor (9000A139)!
9000A139	(*) Support of measuring probe TF-40 up to 700 ° C (probe length 162 mm, cable length 175 mm), for second thermometer PT 5110 (90000139)
90000114	(*) Feeler gauge made of stainless steel, 13 blades from 0.05 mm to 1.00 mm
90000115	Zero point stamp 8 mm character height, for notch-free stamping
90000117	(*) Caliper made of stainless steel with mm and inch graduation, measuring range 150 mm
90000118	(*) Welding seam gauge completely made of stainless steel, measurement A - dimension and seam elevation
90000120	JA-Leder - protective mirror with notepad
90000121A	(*) JA-air gap gauge 1 - 10 mm round design made of stainless steel
90000122	(*) JA edge offset and depth gauge, measuring range up to 10 mm, scale graduation 1/100 mm (for pipe welds up to over 100 mm thick.)
90000123	JA-prism made of stainless steel, 30 mm wide, for edge offset and depth gauge
90000124	JA-measuring needle 90 °, with lock, for edge offset and depth gauge
90000125	JA-measuring needle straight, for edge offset and depth gauge
90000127	(*) Stainless steel ruler, 300 mm long
90000128	Tinted safety glasses
90000129	(*) Tape measure, 3 m long, with inside measure, spirit level and compass
90000138	(*) JA-edge offset gauge made of stainless steel, round design, without support
90000A138	(*) JA edge offset gauge made of stainless steel, small, with support surface, scale in mm with vernier, reading accuracy 1/10 mm, suitable for pipe welds up to 35 mm wall thickness
90000B138	(*) JA-edge offset gauge made of stainless steel, large, with support surface, 2 scales: in millimeters with vernier (reading accuracy 1/10 mm); in inches / inch (reading accuracy 1/128 inch) suitable for pipe welds 100 mm wall thickness
J0410400	JA-flange spirit level made of aluminum, 400 mm long, with two cylindrical drill holes with the diameters 11 mm / 14 mm / 16 mm / 18 mm / 28.5 mm
90000130	JA-case with foam insert (approx. 40 cm x 38 cm x 17 cm)
90000131	JA-control service box, COMPLETE (~7.8 kg)
90000131-K	JA-control service box, COMPLETE (~8.2 kg) >> calibrated (*) <<



JA-Indoor control device in the case



For illuminating hard-to-reach places in the pipe or other component.

J0400050

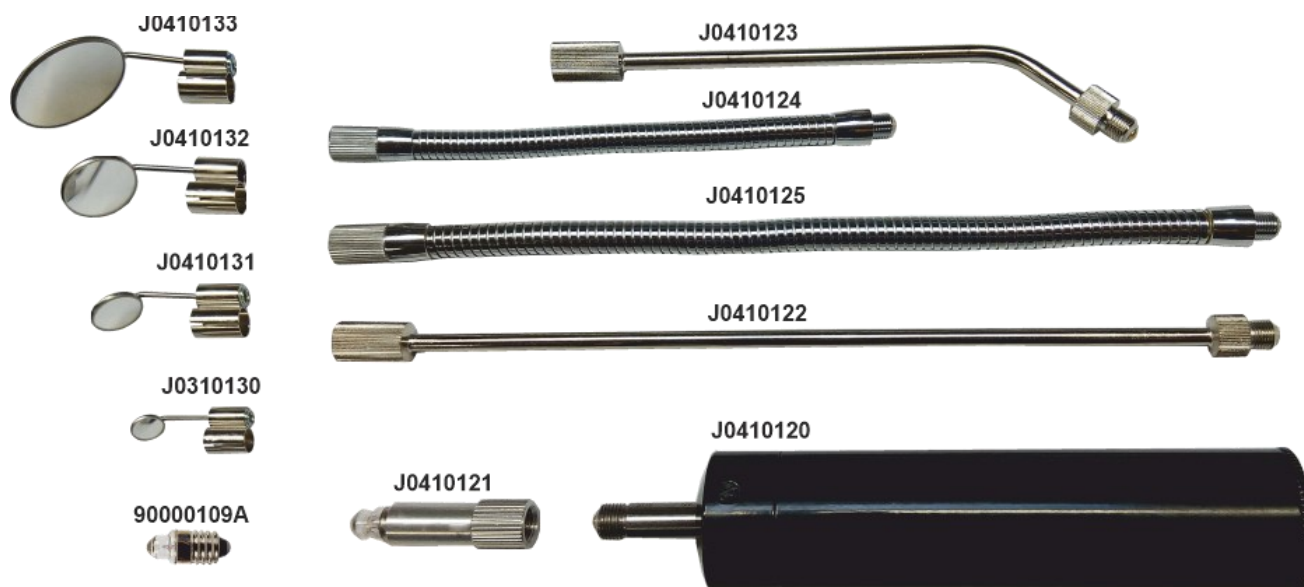
Contents of the JA - internal control device in the case

Article no.	description
J0410120	JA - battery handle for interior control device with slide switch including batteries
J0410121	JA - lamp holder with bulb
J0410122	JA - extension straight, for internal control device, approx. 300 mm long
J0410123	JA - extension angled, for internal control device, approx. 200 mm long
J0410124	JA - probe, flexible, for internal control device, approx. 200 mm long
J0410125	JA - probe, flexible, for internal control device, approx. 300 mm long
J0410130	JA - mirror with ball joint and clamping sleeve for lamp holder Ø 16 mm
J0410131	JA - mirror with ball joint and clamping sleeve for lamp holder Ø 22 mm
J0410132	JA - mirror with ball joint and clamping sleeve for lamp holder Ø 30 mm
J0410133	JA - mirror with ball joint and clamping sleeve for lamp holder Ø 50 mm
90000109	JA - finger lamp made of stainless steel
J0410134	JA - mirror Ø 30 mm with ball joint and clamping clip for finger lamp
J0412602	JA - case with foam inserts for the internal control device (28 cm x 37 cm x 13 cm)

J0400050	Internal control device complete in case (28 cm x 37 cm x 13 cm) ~ 3.0 kg
----------	---



Internal control device, complete **(without case)**



Article no	description
J0410120	JA - battery handle for interior control device with slide switch including batteries
J0410121	JA - lamp holder with bulb
J0410122	JA - extension straight, for internal control device, approx. 300 mm long
J0410123	JA - extension angled, for internal control device, approx. 200 mm long
J0410124	JA - probe, flexible, for internal control device, approx. 200 mm long
J0410125	JA - probe, flexible, for internal control device, approx. 300 mm long
J0410130	JA - mirror with ball joint and clamping sleeve for lamp holder Ø 16 mm
J0410131	JA - mirror with ball joint and clamping sleeve for lamp holder Ø 22 mm
J0410132	JA - mirror with ball joint and clamping sleeve for lamp holder Ø 30 mm
J0410133	JA - mirror with ball joint and clamping sleeve for lamp holder Ø 50 mm

90000108	Interior control device complete (without case); (J0410120-J0410125 + J0410130-J0410133)
----------	---

JA - flange spirit level



Application: For aligning flanges on pipe ends.

Description

Spirit level and two cylindrical borehole holders.

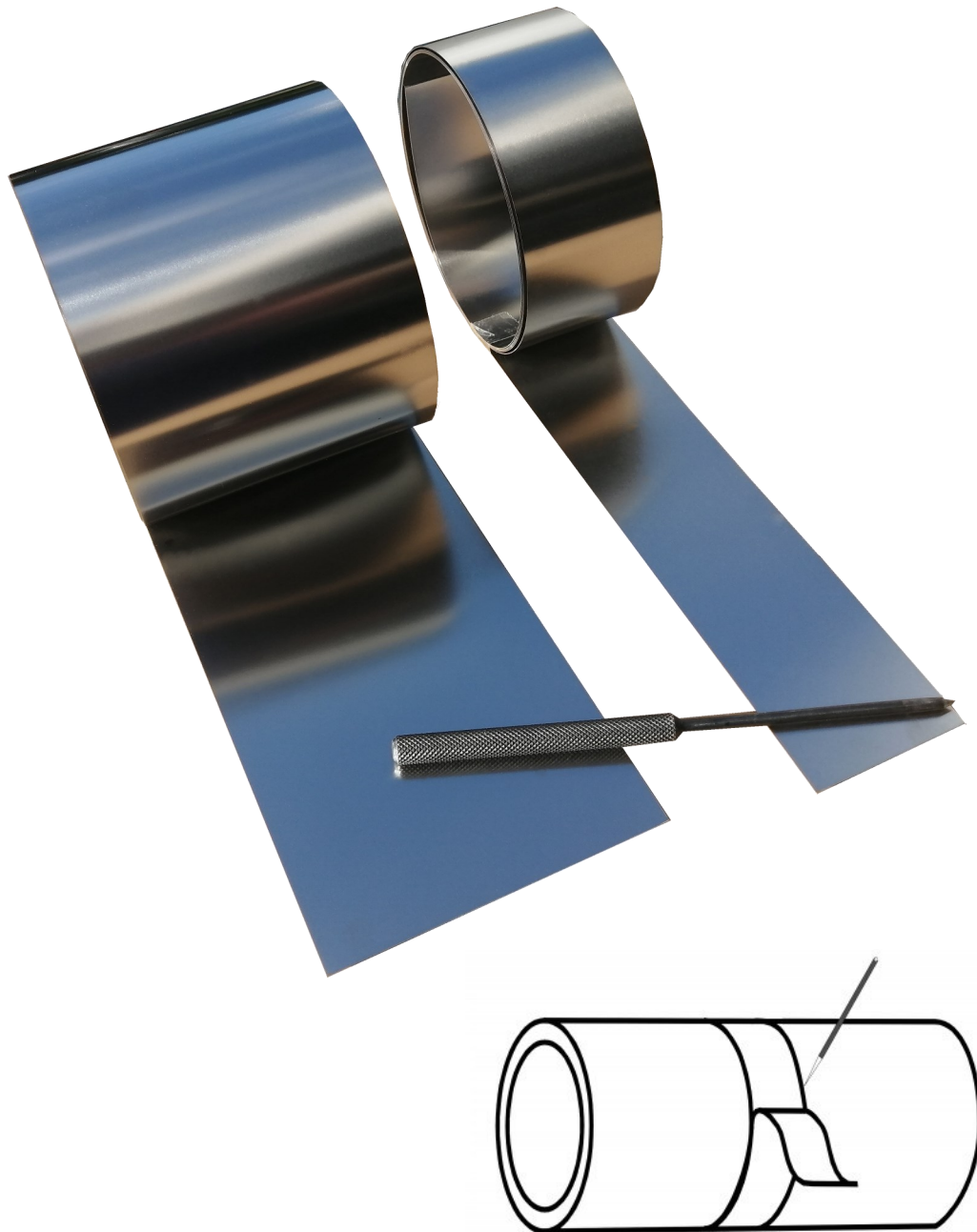
Standard length 400 mm, made of solid anodized aluminum, equipped with several power magnets.

The cylindrical drill holes with the diameters 11 mm / 14 mm / 16 mm / 18 mm / 28.5 mm are infinitely adjustable with the spirit level over the entire length and can be easily screwed on.

J0410400	JA-flange spirit level 400 mm long made of solid anodized aluminum with two cylindrical drill holes (Ø 11 mm, Ø 14 mm, Ø 16 mm, Ø 18 mm, Ø 28.5 mm)
----------	---

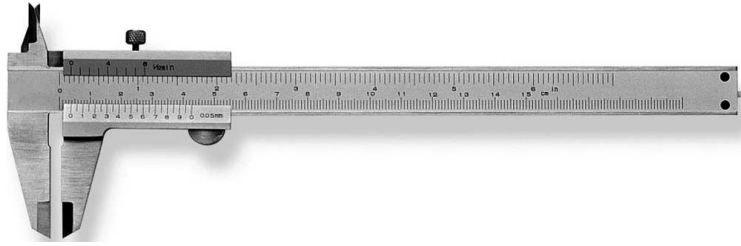
Further borehole recordings are available with different diameters on request!

JA - pipe scribing tape



Application: For marking (scribing) pipes and other components

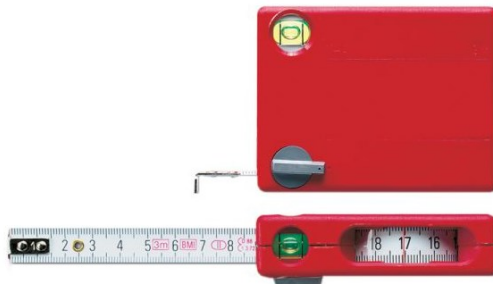
RA05000E	1 m JA-tube scribing tape, width 50 mm x 0.3 mm made of stainless steel (length as required)
RA10000E	1 m JA-tube scribing tape, width 100 mm x 0.3 mm made of stainless steel (length as required)



90000117	Vernier caliper made of high quality stainless steel, DIN 862 and higher; Dimensions: 240 mm x 75 mm
----------	---

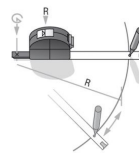


90000127	Stainless steel rule; 300 mm lg. for mm and inches
----------	--



Durch einen ausklappbaren
Zirkeldorn können Kreise bis zu
6 m Durchmesser gezeichnet
werden

*The steel stylus integrated in
the swing-out arm allows
3 m radii to be drawn.*



90000129	Tape measure, 3 m, with inside measure, spirit level and compass
----------	--



90000115	JA - zero point stamp 8 mm character height, notch-free
----------	---



90000101	JA - gas flow meter for precise gas flow determination at the burner outlet or with forming gas
----------	---



90000110	Pocket magnifier, magnification 3 x, 6 x, 9 x
----------	---



Technische Daten

Schutzstufe	2-1,7
Scheibenfarbe	Grün
Fassungsfarbe	gun metal
Modelltyp	HAWA Brille Winner
Modell	9159 winner
Klasse	Brillen
EN-Norm	EN 170
Produkttyp	Bügelbrille Metall
Produktart	2-Scheibenbrille
Beschichtung	Optidur 4C+ UV
Risiken durch Strahlung	Sonnenstrahlung/Blendung UV Strahlung (UV400)

900000128	Safety goggles; These rimless metal glasses allow a clear view in all directions; Flat panes offer excellent protection and optimal coverage of the eye area, movable nose pads, high-quality spring hinges; Barrel color gun, W 166 F CE; Lens green / UV 400, 2-1.7 W 1 FKN CE, scratch-resistant, anti-fog
-----------	--



90000112	JA - telescopic magnet with ballpoint pen, approx. 130 mm - 900 mm long x Ø 8 mm
----------	--



90000143	Ø 16 mm JA - telescope mirror with ballpoint pen; Changeable mirror, extendable 180 mm - 900 mm long
90000140	Ø 22 mm JA - telescope mirror with ballpoint pen; Changeable mirror, extendable 180 mm - 900 mm long
90000141	Ø 30 mm JA - telescope mirror with ballpoint pen; Changeable mirror, extendable 180 mm - 900 mm long
90000142	Ø 50 mm JA - telescope mirror with ballpoint pen; Changeable mirror, extendable 180 mm - 900 mm long

90000145	Replacement mirror for the telescopic ballpoint pen Ø 16 mm
90000146	Replacement mirror for the telescopic ballpoint pen Ø 22 mm
90000147	Replacement mirror for the telescopic ballpoint pen Ø 30 mm
90000148	Replacement mirror for the telescopic ballpoint pen Ø 50 mm



90000120	JA - Leder - Schutzspiegel mit Notizblock und Stift; Gläser A9; Abmessung 175 x 90 x 3 mm
----------	---



VPE = 5 Stck.



90000109	1 pc. JA- finger lamp made of stainless steel with light bulb to illuminate the welding joints (without batteries); Ø 16.5 mm x 138 mm
90000109A	Replacement bulb 2.2V 0.4A
90000109B	2 pieces Batteries (Mignon)

There is no light source that produces a spectrum that is more similar to sunlight than a light bulb.

As a temperature radiator, it has a quasi-continuous spectrum.

Best color rendering, especially when checking tarnish colors, therefore the light quality of light bulbs can be a emit continuous sunlight-like full color spectrum and the highest color rendering index of Ra 100 can be achieved which compact fluorescent lamps and LEDs cannot achieve.



Industriebedarf und Schweißtechnik

E. Jankus GmbH

Natorper Str. 88

D 59439 Holzwickede / Germany

Tel.: +49 (0)2301 120 42-43 Fax: +49 (0)2301 4441

Mail: info@ja-online.de Web: www.ja-online.de



Please note that we are constantly improving our products, we reserve the right to make changes without prior notice and are not liable for damage caused by improper use of our products.

